

Foundations for Learning

Getting ready for preschool and school from an Occupational Therapy perspective



Presented and prepared by Shelley Peart- Occupational Therapist
Permission is required from Shelley Peart prior to duplicating and/or adapting.

session outline

1. Introduction
2. OT Developmental Lens
3. Attachment Relationships
4. Sensory Motor Foundations
5. Play
6. Nature Pedagogy
7. Where to next?
8. Questions

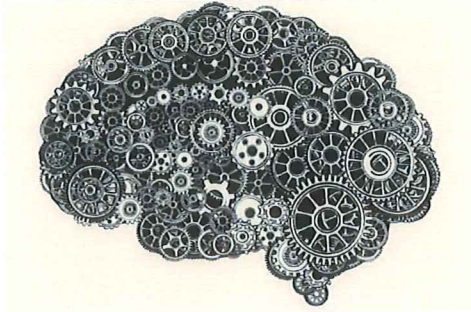
introductions

About Me

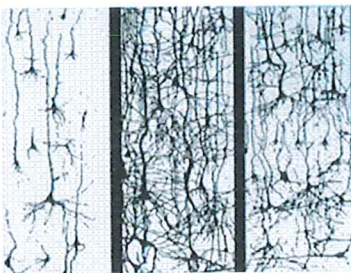
About You



OT developmental lens



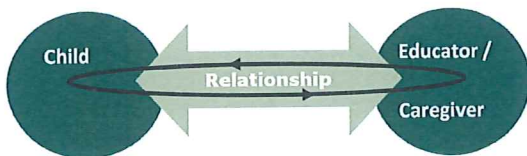
neuropathways



At birth 6 yrs old 14 yrs old
Rethinking the Brain, Families and Work Institute,
Rima Shore, 1997.
Slide from Dr Frazer Mustard, SA Thinker in Residence

attachment relationships

"the dyadic regulation of infant emotion and arousal"
(Eco/Le 1994)



pretend play

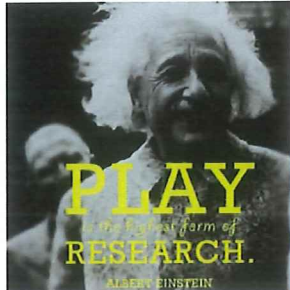


Image from: <http://www.aikideas.com/AlbertEinsteinPlayingQuotesAndSayings/Play-is-the-highest-form-of-research-bertheleste-2/>

nature pedagogy



Image from: <http://www.mhcapomag.com/ideas/cedarsong-nature-school-classroom-forest/>

where to next?

Round room discussion

1. How can you implement these ideas on development further in to daily practices for program planning?
2. Was there anything that surprised you during this talk?
3. What is your 1 take home message from today's talk?



Any questions 

references

Ayres, A. Jean & Robbins, Jeff (2005) *Sensory Integration and the Child: Understanding Hidden Sensory Challenges*. Western Psychological Services, United Kingdom.

Bernier, A, Carlson, S., Whipple, N., 2010 From external regulation to self-regulation: Early parenting precursors for young children's executive function. *Child Development*, January/February Volume 81, Number 1, Pages 326-339.

Bundy AC (1997) Play and playfulness: What to look for. In: Parham D, Fazio L, eds. *Play in occupational therapy for children*. New York: Mosby, 52-66.

Canadian Association of Occupational Therapists (1996) Occupational therapy and children's play. *Canadian Journal of Occupational Therapy*, 63, 1-9.

Claire Warden: <http://www.clairewarden.com/nature-pedagogy/>

Mehopols: <http://www.metropolismag.com/ident/cedarjona-nature-school-classroom-forest/>

Nature Pedagogy: <https://www.naturepedagogy.com/>

Route, L.A. (1996). *Emotional development: The organization of emotional life in the early years*. New York: Cambridge University Press.

Stagnitti, Karen & Unsworth, Carolyn. 2000. The importance of Pretend Play in Child Development: An Occupational Therapy Perspective. *British Journal of Occupational Therapy*, pg. 121-127.

Uen, Nicole & Stagnitti, Karen 2003. Pretend play, social competence and involvement in children aged 5-7 years: The concurrent validity of the Child-Initiated Pretend Play Assessment. *Occupational Therapy Australia*, pg. 33-40.

Warden, Claire *Learning With Nature, Embedding Outdoor Practices*. Published by Sage Publications Ltd, United Kingdom.
