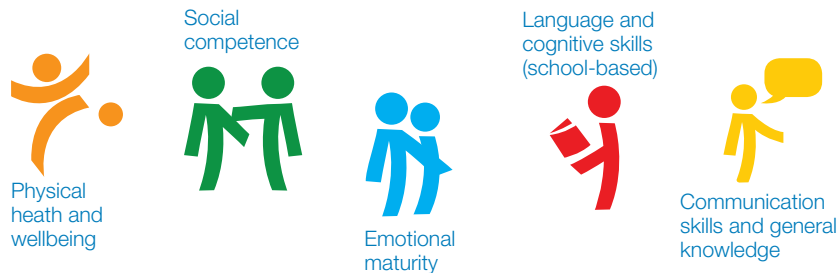


Local Government

The AEDC is a reliable measure of child development across five domains.



Use the AEDC confidently as a holistic measure of child development in your community.

The AEDC is a starting point for identifying the needs of children in your community.



Use the AEDC results to consider how you can contribute to better outcomes for children in your area.

Families are not always able to access quality services to support their children's development.

BARRIERS TO ACCESS:

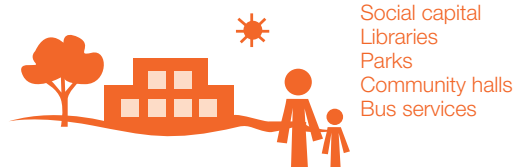


Examine solutions to barriers to access for families residing in your local government area.

AEDC is an early indicator of the future prosperity of your community.



COMMUNITY ASSETS SUPPORTING CHILDREN:



Examine how your local government area assets are being used to support child development.

Local governments play a key role in promoting early child development.



Monitor improvements in the AEDC results over time in your local government area.