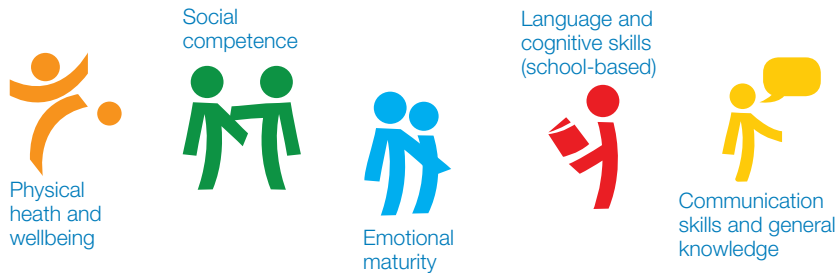


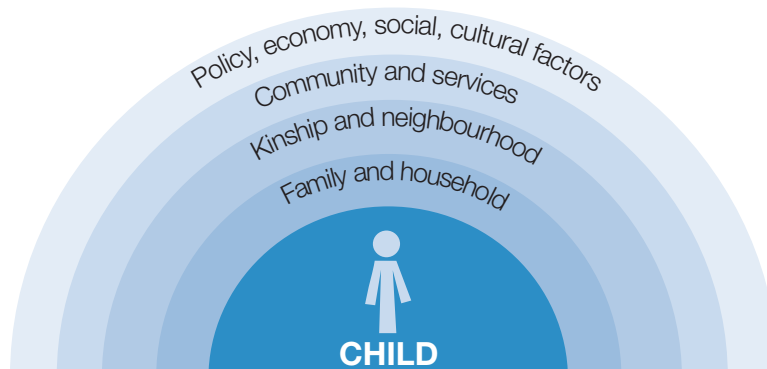
## Early Childhood Sector

The AEDC is a reliable measure of child development across five domains.



Use the AEDC confidently as a holistic measure of child development in your community.

The AEDC is a starting point for identifying the needs of children in your community.



Use the AEDC results to start a conversation with other service providers in your area.

Early childhood services have an important role in children's development.



Every early childhood provider impacts on the AEDC results.

Good programmes at critical points in development are able to shape children's outcomes across five domains.



Critically evaluate your programmes in line with national quality standards.

The AEDC can be used to identify strengths in your area.



Monitor improvements in the percentage of children on-track over time.